

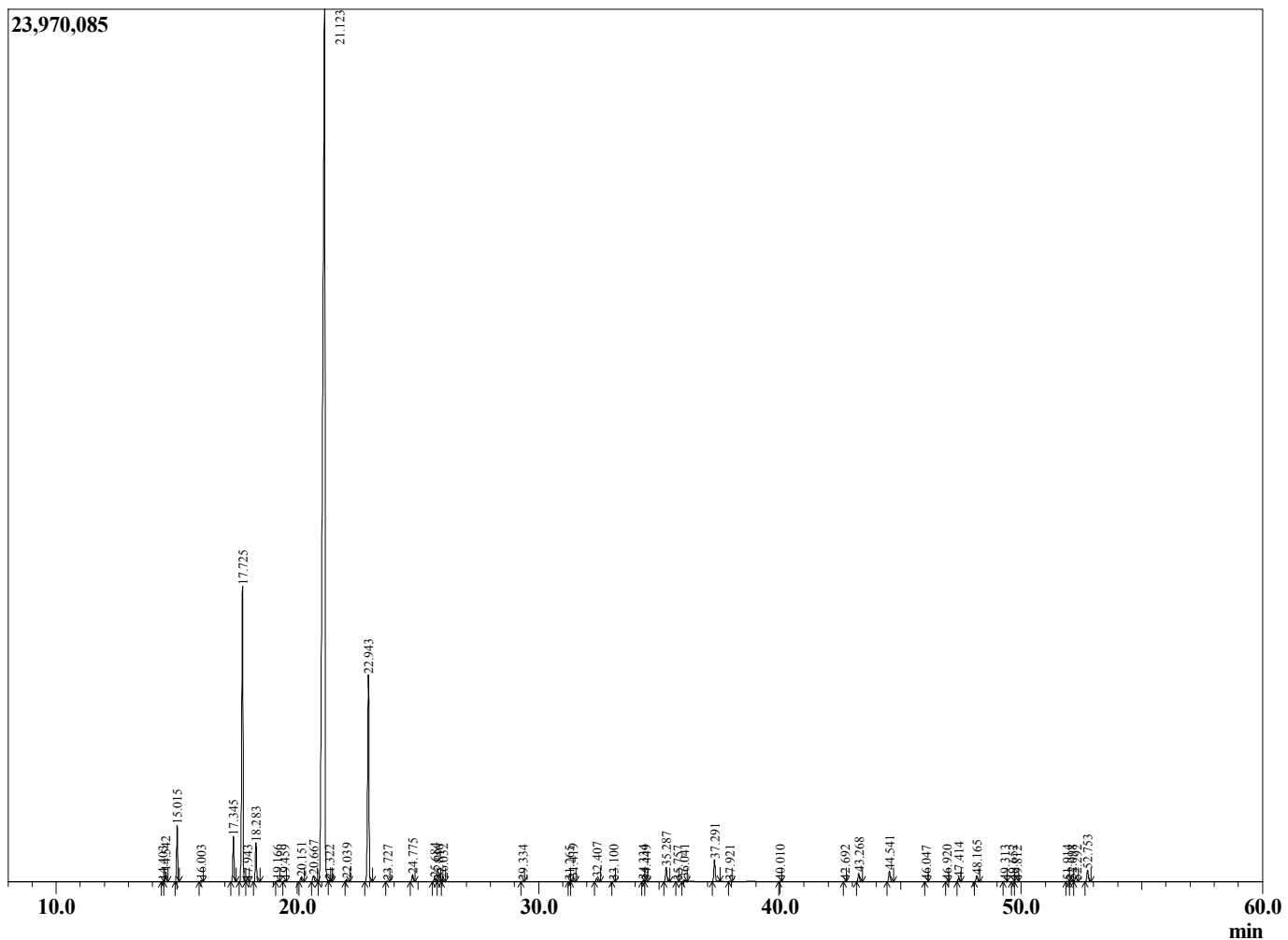
Sample Information

Sample Type : Essential Oil
 Sample Name : Citrus limon

Lemon
 Lot# ITX42-XT
 Country: Italy



Chromatogram Citrus limon



R.Time	Name	Area%
14.403	Tricyclene	0.00
14.542	alpha-Thujene	0.35
15.015	alpha-Pinene	1.99
16.003	Camphene	0.05
17.345	Sabinene	1.77
17.725	beta-Pinene	12.27
17.943	6-Methyl-5-hepten-2-one	0.01
18.283	Myrcene	1.48
19.166	Octanal	0.04
19.459	alpha-Phellandrene	0.03
20.151	alpha-Terpinene	0.17
20.667	para-Cymene	0.31
21.123	Limonene	67.41
21.322	(Z)-beta-Ocimene	0.02
22.039	(E)-beta-Ocimene	0.09
22.943	gamma-Terpinene	9.19
23.727	trans-Sabinene hydrate	0.03
24.775	Terpinolene	0.30
25.684	Linalool	0.12
25.846	cis-Sabinene hydrate	0.03
26.032	Nonanal	0.08
29.334	Citronellal	0.03
31.265	trans-Isocitral	0.01
31.419	Terpinen-4-ol	0.07
32.407	alpha-Terpineol	0.17
33.100	Decanal	0.02
34.334	Nerol	0.04
34.449	Citronellol	0.01
35.287	Neral	0.64
35.757	Carvone	0.01
36.041	Linalyl acetate	0.10
37.291	Geranial	1.02
37.921	Perillaldehyde	0.01
40.010	Undecanal	0.01
42.692	Citronellyl acetate	0.01
43.268	Neryl acetate	0.38
44.541	Geranyl acetate	0.51
46.047	Tetradecane	0.01
46.920	cis-alpha-Bergamotene	0.02
47.414	trans-beta-Caryophyllene	0.17
48.165	trans-alpha-Bergamotene	0.28
49.313	(E)-beta-Farnesene	0.02
49.652	alpha-Humulene	0.01
49.812	epi-beta-Santalene	0.01
51.914	Valencene	0.02
52.098	Bicyclogermacrene	0.05
52.292	(Z)-alpha-Bisabolene	0.03
52.753	beta-Bisabolene	0.57
		100.00